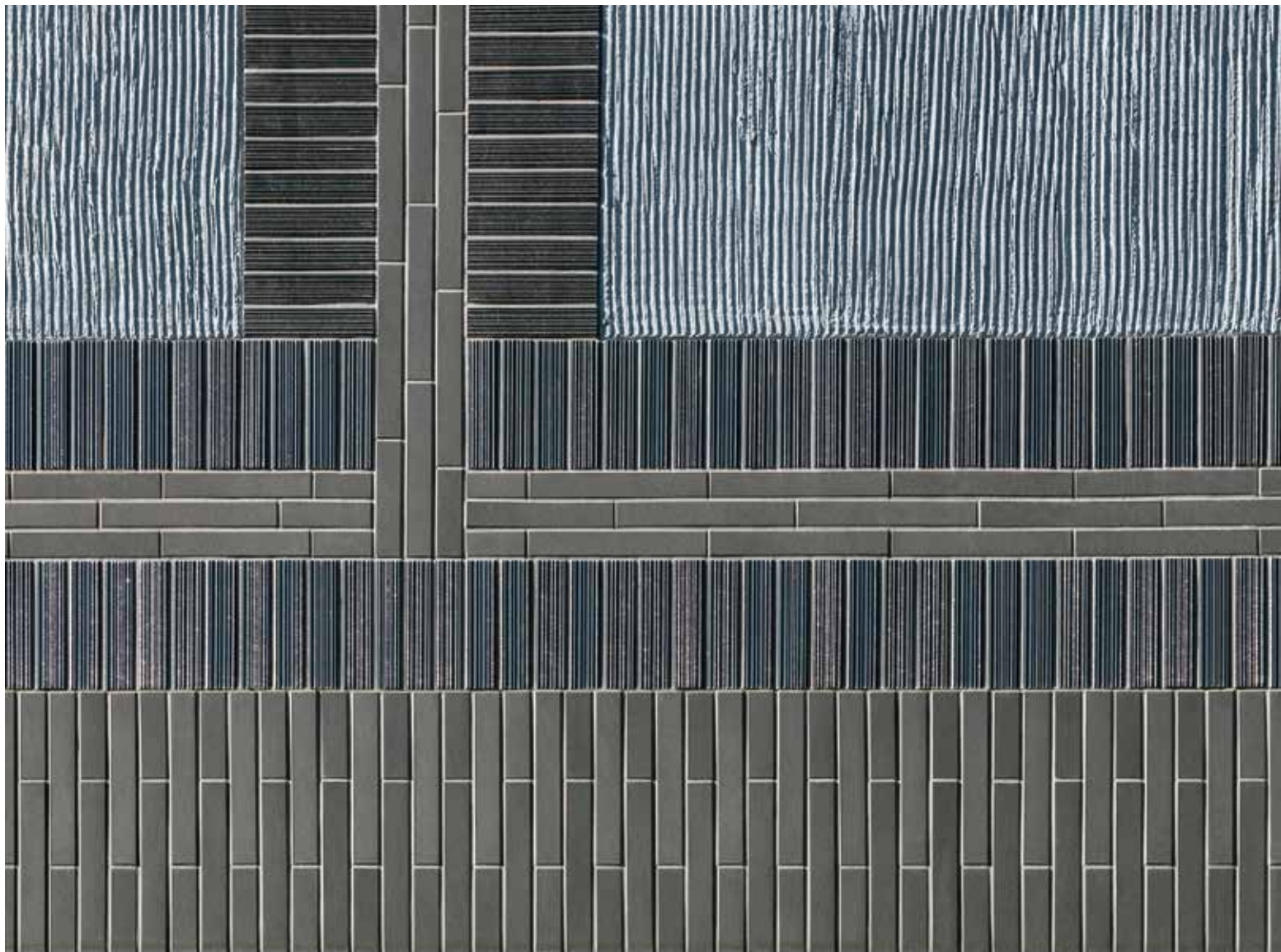


CRAFT

Ceramic with character



CRAFT – INSPIRING AND MODERN —

The heritage hype in fashion, lifestyle and technology that has been going on for years has also left its mark in the area of tiles. Craft is familiar yet comes across as being surprisingly modern: equally suitable for interior and exterior areas, its artisan character draws on the depth and transparency of its high-gloss glaze. Compositions of alkaline earths, fluxing agents and metal oxides in combination with the clay body can give rise to particularly expressive colorations and typical surface structures under open flame guidance.



Natural raw materials – extracted from the earth

Guterborn clay pit, Westerwald. A bizarre landscape comprising multicolored layers of earth marks the shape of the clay deposit, grown over geological periods of time under the mantle of a thick layer of basalt. As a raw material, clay is recovered from the primeval mantle of volcanic rock. Over millions of years, heat and frost, wind and earth movement have wrested mud components from the rock. Under the electron microscope, they reveal their own structural composition as a multi-layered mineral – a prerequisite for the unique characteristics of clay: “plasticity”. The men who use heavy equipment to extract the clay from the pit do not need any testing equipment to distinguish between the different types of clay within the site.

They can already tell during the extraction process whether the clay in a particular place is particularly “fat”, i.e. whether it is plastic. In fact, even a layman can tell if it contains iron oxides by its typical red color. These oxides later play a decisive role in kiln firing.



Pure material

Our material basically comprises clays containing iron oxides, quartz and feldspar in special mixtures. Plastic in its raw form, the basic material is prepared in special formulations and compacted under high pressure. During the firing process in a tunnel kiln over 120 metres long, the material is sintered in an open fire zone to form an extremely hard, resistant body with a unique surface pattern. Exclusively manufactured from natural raw materials, fully recyclable, durable, heat-retaining and skin-friendly, building ceramics from the tunnel kiln offer countless application possibilities in all areas of architecture.



FIRED IN OPEN FLAME GUIDANCE

Split tiles are manufactured by extrusion. In a metre-high press, the clay mass is homogeneously mixed and plastically prepared to form an infinite strand, with a mouthpiece of hardened steel formulating the outer and inner shape of the future split tile. In cross-section, the strand forms two plates whose backs face inwards and which are connected to each other by perforated webs. The coupling enables above all dimensional stability during drying and during ceramic firing in open flame guidance.



The dried blanks are stacked on a highly-refractory trolley and transported via rails into the 120-metre-long tunnel kiln.



During the last production stage, the pair of tiles hanging together is separated from each other at the predetermined breaking points of the webs.



The compact double structure also allows upright transport on the conveyor belts through all stages of production.



SPACE FOR DETAILS

Colors ranging from white to grey tones, olive and golden yellow to amber and blue-green make for freedom of design and exceptional aesthetics. The strip tile formats with a 3D effect are particularly charming.



Private apartment Roseaux, Braine-L'Alleud, Belgium
Architect: Interior Design Studio Maxime de Campenaere
Photo: Maxime de Campenaere

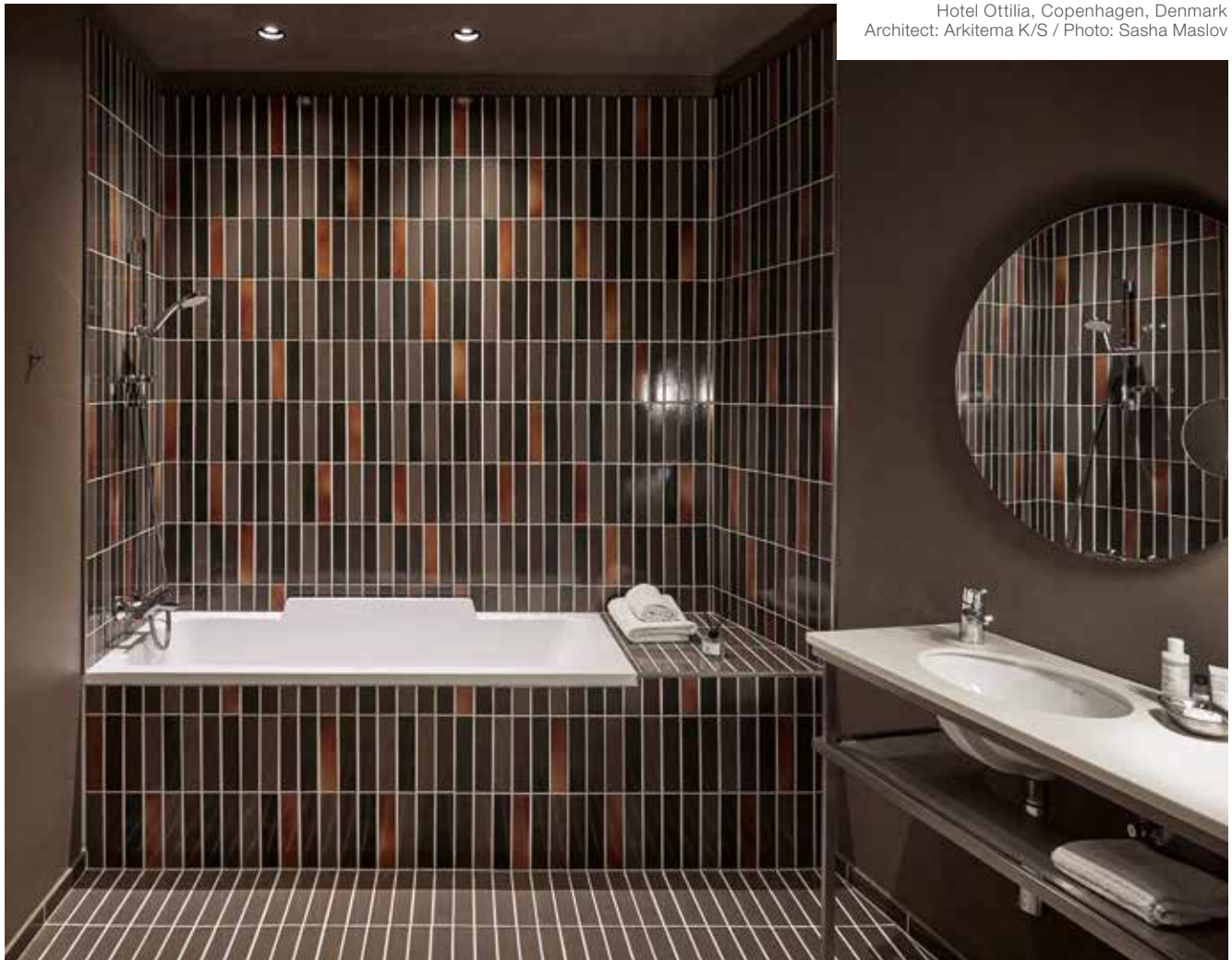


Bar Bardem, Helsinki, Finland
Architect: Fyra Ltd / Photo: Riikka Kantinkoski





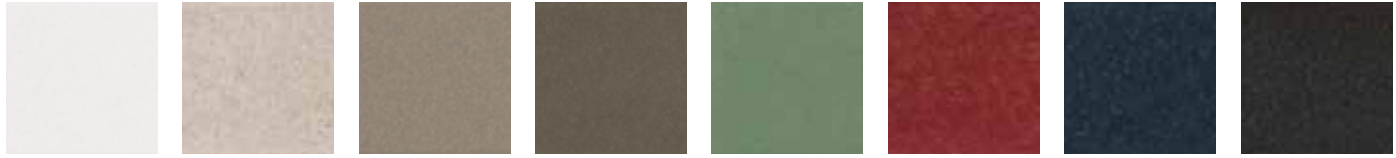
OCTAVE Restaurant, Antwerp, Belgium
Architect: real.space agency / Photo: Marcel van der Burg



Hotel Ottilia, Copenhagen, Denmark
Architect: Arkitema K/S / Photo: Sasha Maslov

PRODUCT OVERVIEW CRAFT

Plain colors



pure white white mid-grey dark grey jade green beryl red benit blue hematite black

Flamed colors



olive-green flamed gold-yellow flamed amber flamed blue-green flamed

Natural ceramic colors



gold-ochre gold-cream gold-grey gold-black tobacco

These colors are only available in 8.3 x 25 cm.

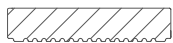
Tobacco is available in both 8.3 x 25 cm and 6.2 x 25 cm.



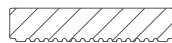
Formats and cross-sections



Strip tile
8.3 x 25 x 1.1 cm



Strip tile
6.2 x 25 x 1.1 cm



Strip tile, wave profile
6.2 x 25 x 1.6/1.1 cm



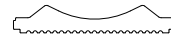
Strip tile, grooved profile
6.2 x 25 x 1.1 cm



Strip tile, V-pointed profile
6.2 x 25 x 1.8/1.1 cm



Dual-tipped tile
12.5 x 25 x 2.0/1.1 cm



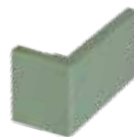
Drip edge cover
25 x 30 x 2.0 cm



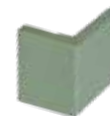
Nosing tile
12.5 x 25 x 1.1 cm



Nosing tile
6.2 x 25 x 1.1 cm



Corner piece
6.2 x 12.5 / 6.2 x 1.1 cm

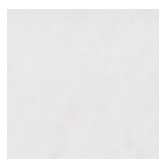


Corner piece
6.2 x 6.2 / 6.2 x 1.1 cm



PRODUCTS CRAFT EXTENDED

Plain colors



chalky white



natural white



pearl-grey



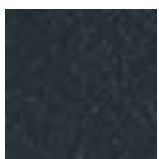
natural grey



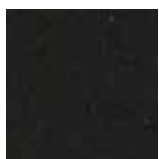
reseda green



crimson

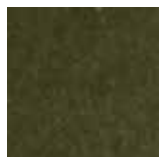


cobalt blue



deep black

Flamed colors



reed-green flamed



red-brown flamed



petrol-blue flamed



Available in other colors on request.

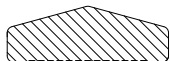
Formats and cross-sections



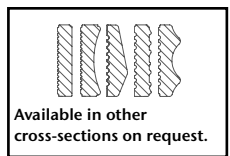
Long strip tile,
6.2 x 50 x 1.1 cm



Long V-pointed strip tile, symmetrical,
6.2 x 50 x 1.8/1.1 cm

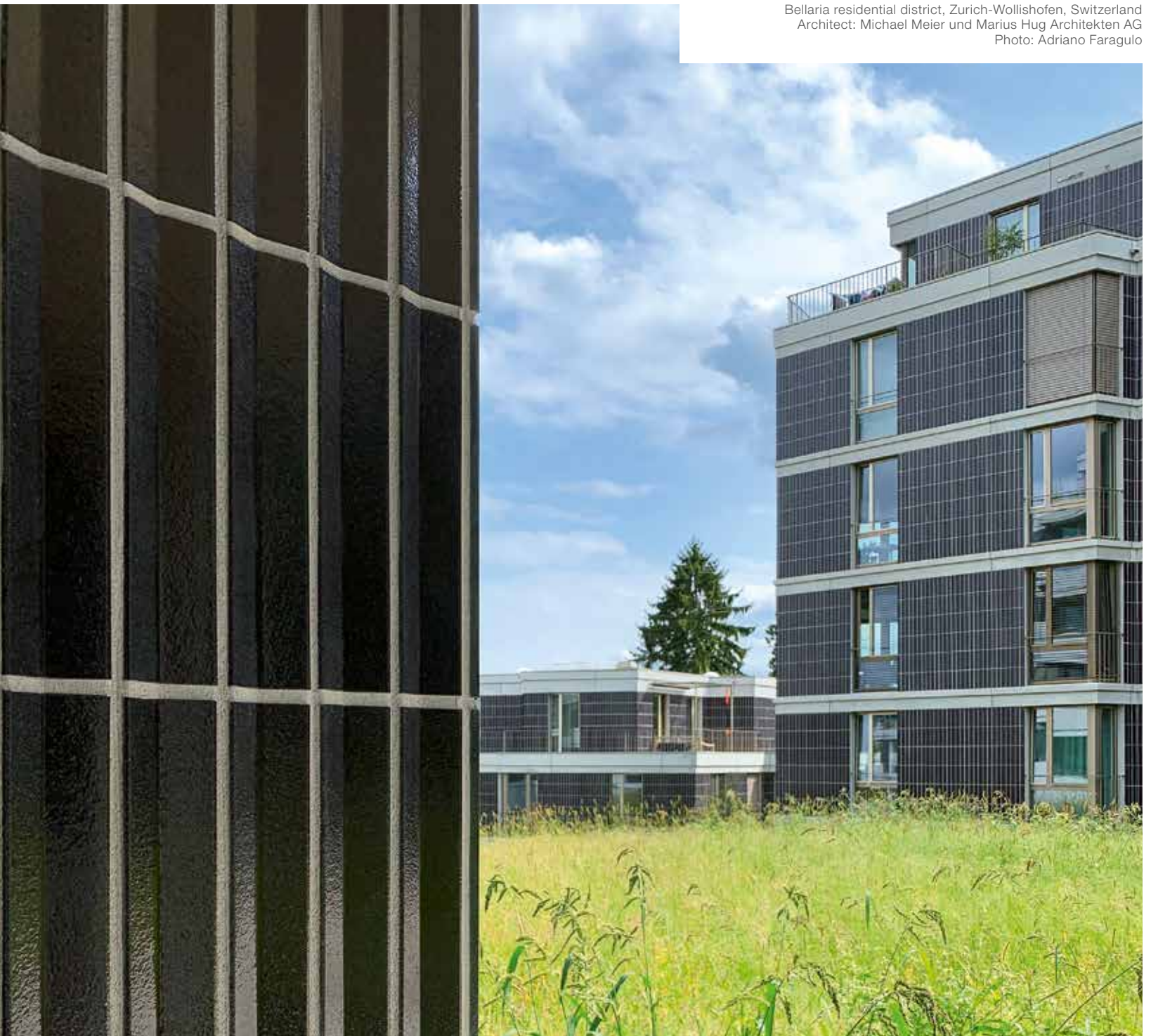


Drip edge cover,
31 x 30 x 1.5 cm



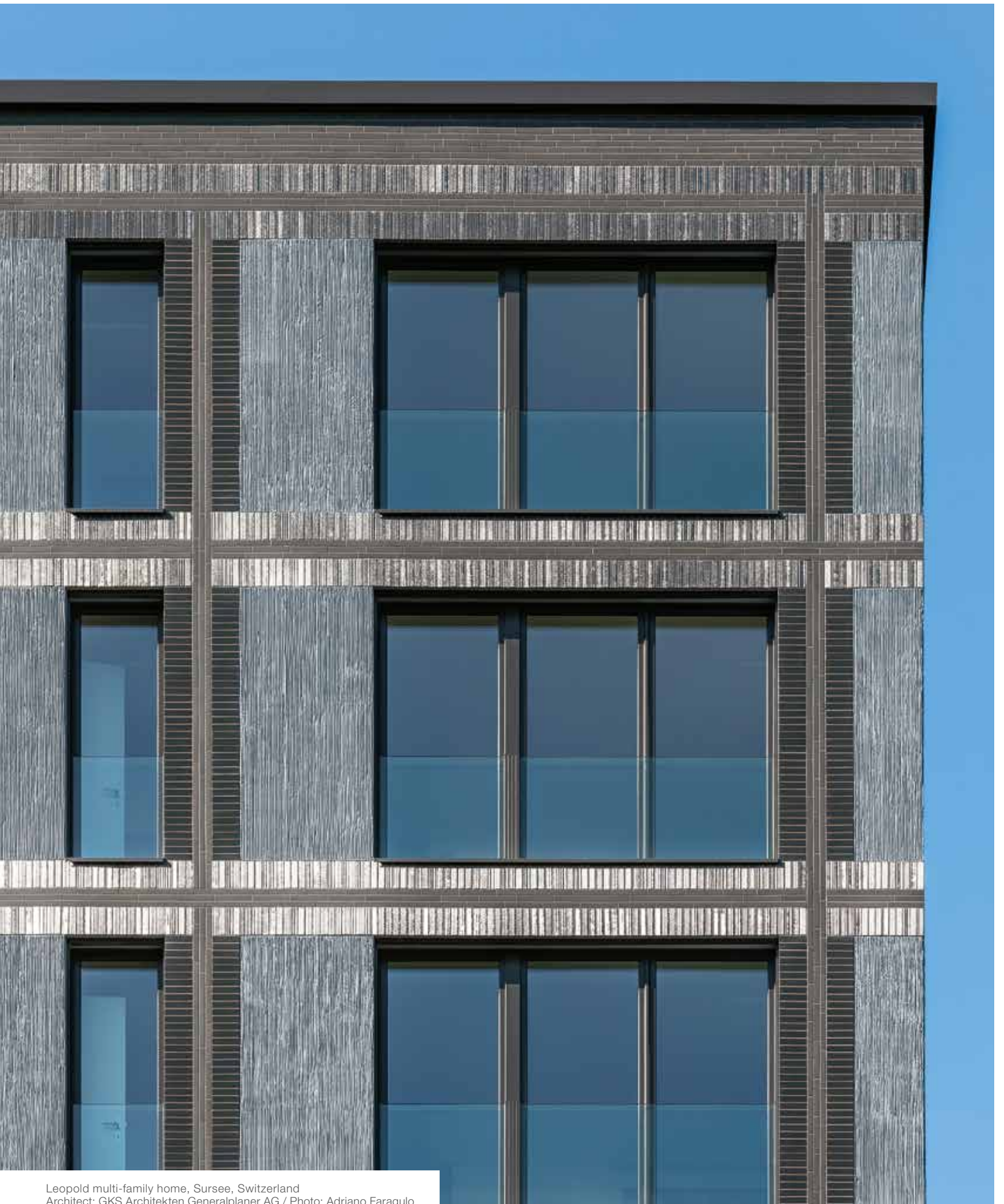
Available in other cross-sections on request.

More information:
www.agrob-buchtal.de



INSPIRED BY FACADE TRENDS

When it comes to hand-crafted charm and a deep glossy glaze, Craft is the answer. The strong appearance of the series is elaborated on by an "Extended Version", which comes up with more flexible special production options and longer formats. Stimulated by the idea that architecture as an urban building block can reflect an individual attitude to life and create a quality of experience, Craft Extended with formats of up to 50 cm offers new design possibilities for innovative facade design. In addition to the impressive gestures of its elongated formats, the series extension once again convinces with a wide range of colors.



Leopold multi-family home, Sursee, Switzerland
Architect: GKS Architekten Generalplaner AG / Photo: Adriano Faragulo



MULTIFACETED CERAMIC FACADE

The wave profile and the large dual-tipped tile are mainly used for facade design and take into account the renaissance of classic building ceramics, which can currently be observed in many European countries.



Fritz Tower, Berlin, Germany
Architect: Sauerbruch Hutton
Photo: Jochen Stüber





Grätzelmixer, Wien, Austria
Architects: KABE Architekten ZT-GmbH
Photo: Fotodesign Peters, Amerang





Vivendra Foundation, Dielsdorf, Switzerland
Architects: L3P Architekten ETH FH SIA
Photo: Adriano Faragulo



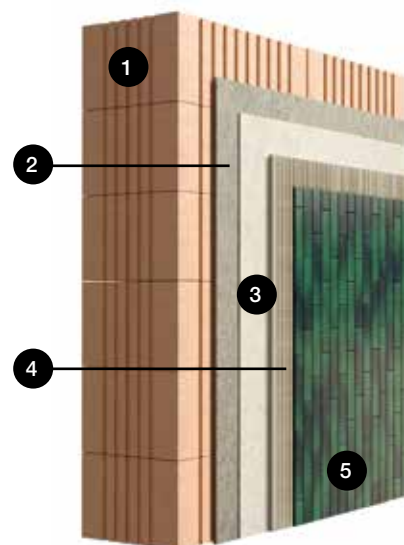
THE THREE TYPES OF FASTENING FOR CERAMIC FACADES

Ceramic facade – conventional installation

The outer wall cladding provides protection against the weather and other effects from the atmosphere as well as against mechanical stresses, and serves as a design element.

System configuration

The mortared external wall cladding is a construction comprising tiles or slabs, their setting mortar and pointing. The laying surface (setting surface) consists of a flat, rigid surface on which the tiles or slabs are processed. The requirements for the laying substrate, the covering material, the fixing materials and execution are regulated in the DIN 18515-1 standard.



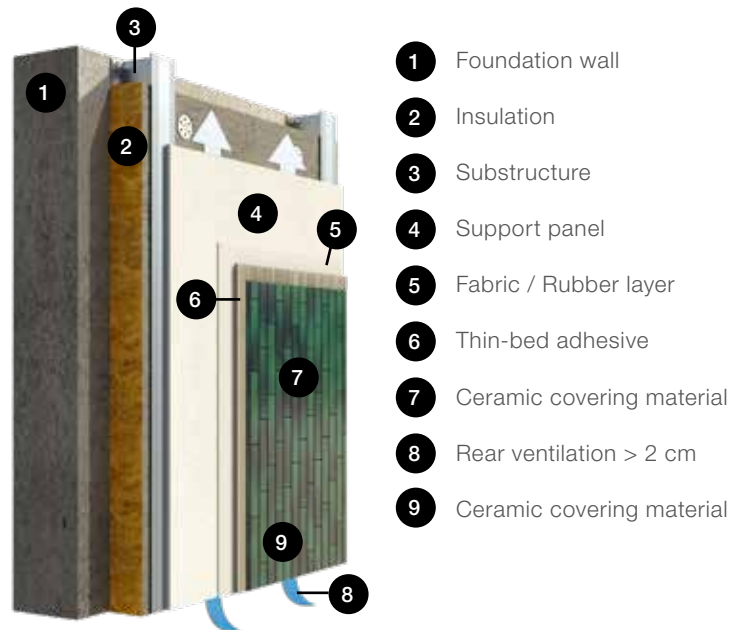
- 1 Load-bearing substrate
- 2 Cement levelling
- 3 Plaster reinforcement
- 4 Thin-bed mortar certified to DIN EN 12004
- 5 Ceramic certified to DIN EN 14411

VHF – Curtain-type, rear-ventilated facade with ceramic covering on support panels

Aesthetics, feasibility and sustainability: the continued success of curtain-type, rear-ventilated facades (VHF) made of ceramic is based on a combination of these three factors. Decisive for the technical superiority of VHF systems is the constructive separation of the functions of thermal insulation and weather protection.

System: design and function

Thanks to the air layer that lies between the outer facade cladding (ceramic), which protects against snow and rain, and the insulation (usually mineral wool), VHF systems improve sound insulation and the indoor climate, save heating costs, and conserve natural resources. The processing of this system must be carried out in accordance with the applicable proof of usability (e.g. general building authority approval).



TICS – External thermal insulation composite system with ceramic covering

Energy-saving, weather-resistant and permanently attractive: ceramic external Thermal Insulation Composite Systems (TICS) fulfil all requirements for a perfect building shell. Ceramic coverings are not only durable and color-fast; the large selection of formats, surfaces and colors also offers enormous design possibilities. Custom-made products, a strength of Agrob Buchtal, provide scope for additional freedom, as the reference objects on this website show.

System configuration

The thermal insulation composite system consists of insulation boards that are dowelled and glued to the substrate. On top of this, a ceramic covering is bonded to a sub-plaster reinforced with textile glass mesh. Processing of this system must be carried out in accordance with the respective valid proof of usability (e.g. general building authority approval).



More information available here:
<https://facade.agrob-buchtal.de/de>

AGROB BUCHTAL GmbH
Buchtal 1
D-92521 Schwarzenfeld
Tel.: +49 (0) 94 35-391-0
Fax: +49 (0) 94 35-391-34 52
E-mail: agrob-buchtal@deutsche-steinzeug.de
Internet: www.agrob-buchtal.de

www.assenmacher.net

03/2022, subject to change

The publisher does not accept any liability for printing errors.
Color deviations from original products may arise for technical printing reasons.

