





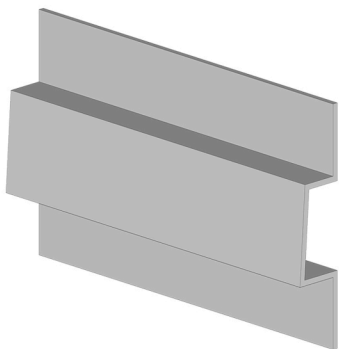
- Water absorption  
EN ISO 10545-3 <math>< 0,5 - 3,0\%</math>
- Frost resistance  
EN ISO 10545-12 ✓
- Thermal shock resistance  
EN ISO 10545-9 ✓



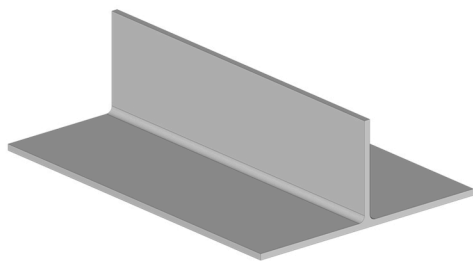
- Stain resistance  
EN ISO 10545-14 5
- Chemical resistance  
EN ISO 10545-13 GA

- Modulus of rupture  
EN ISO 10545-4 >math>> 17N / mm^2</math>
- Impact resistance  
EN ISO 10545-5 0,7-0,9
- Dimensional tolerance  
EN ISO 10545-2 ✓

RUSTIKOTTA TILE



OMEGA PROFILE



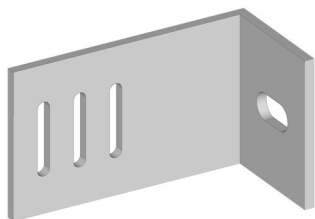
VERTICAL T PROFILE



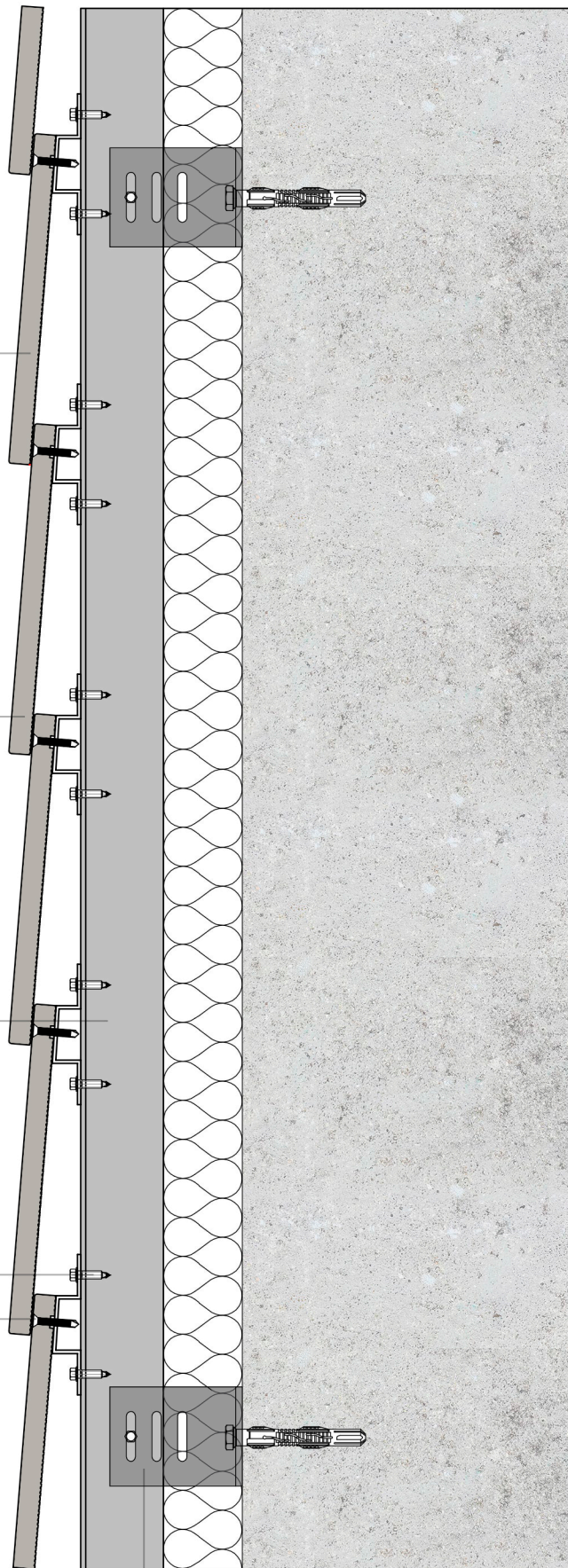
COUNTERSUNK STAINLESS STEEL  
SELF DRILLING SCREW 4,2x28



STAINLESS STEEL SELF DRILLING  
SCREW 5,5x25



RETAINING BRACKET







Maximum distance recommended between vertical profiles 1000mm



Use two screws for fixing the tile

Rubber Washer

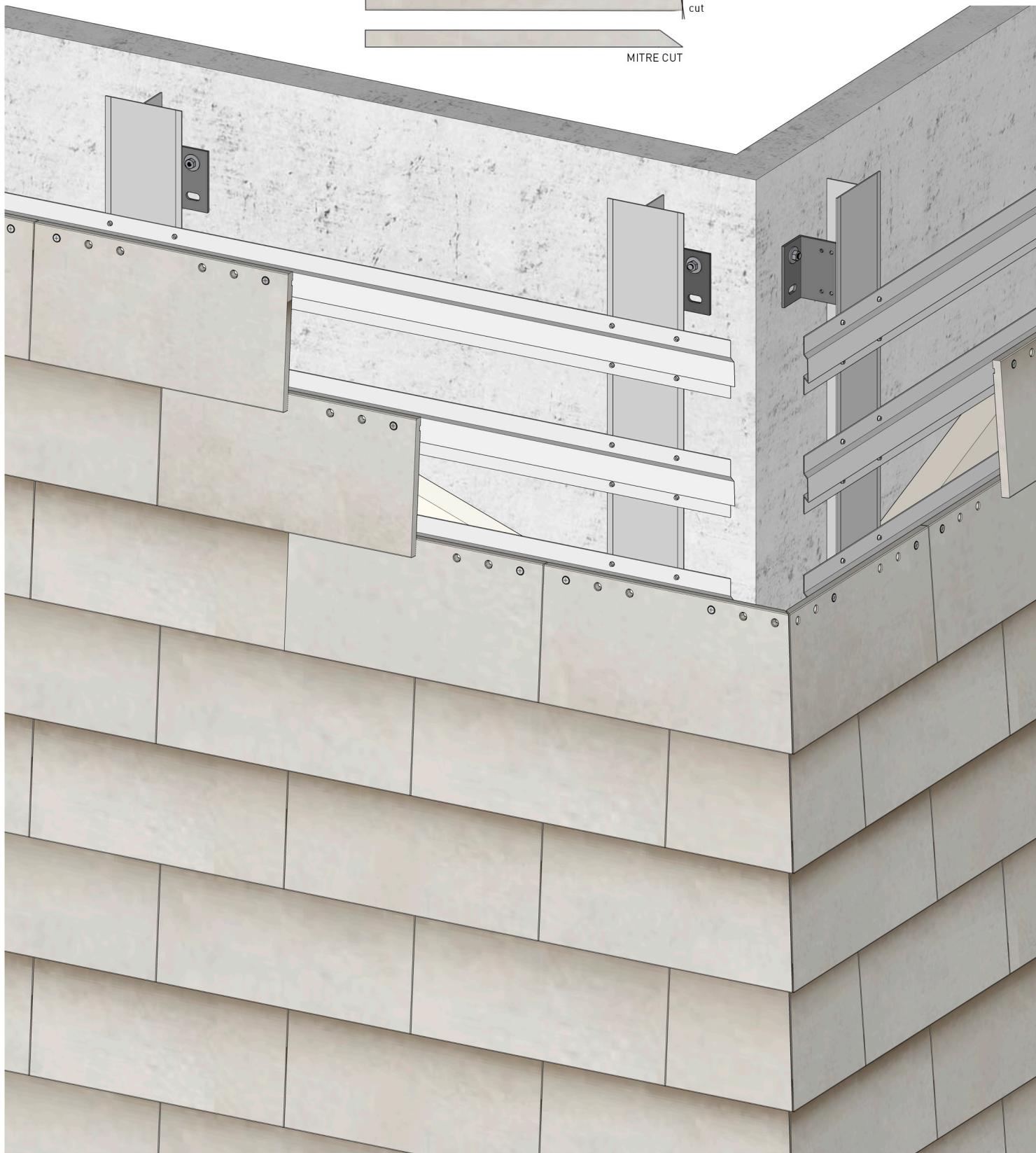
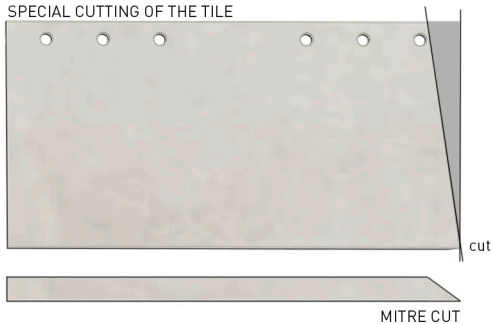
1,5-2mm JOINT

Plain surface

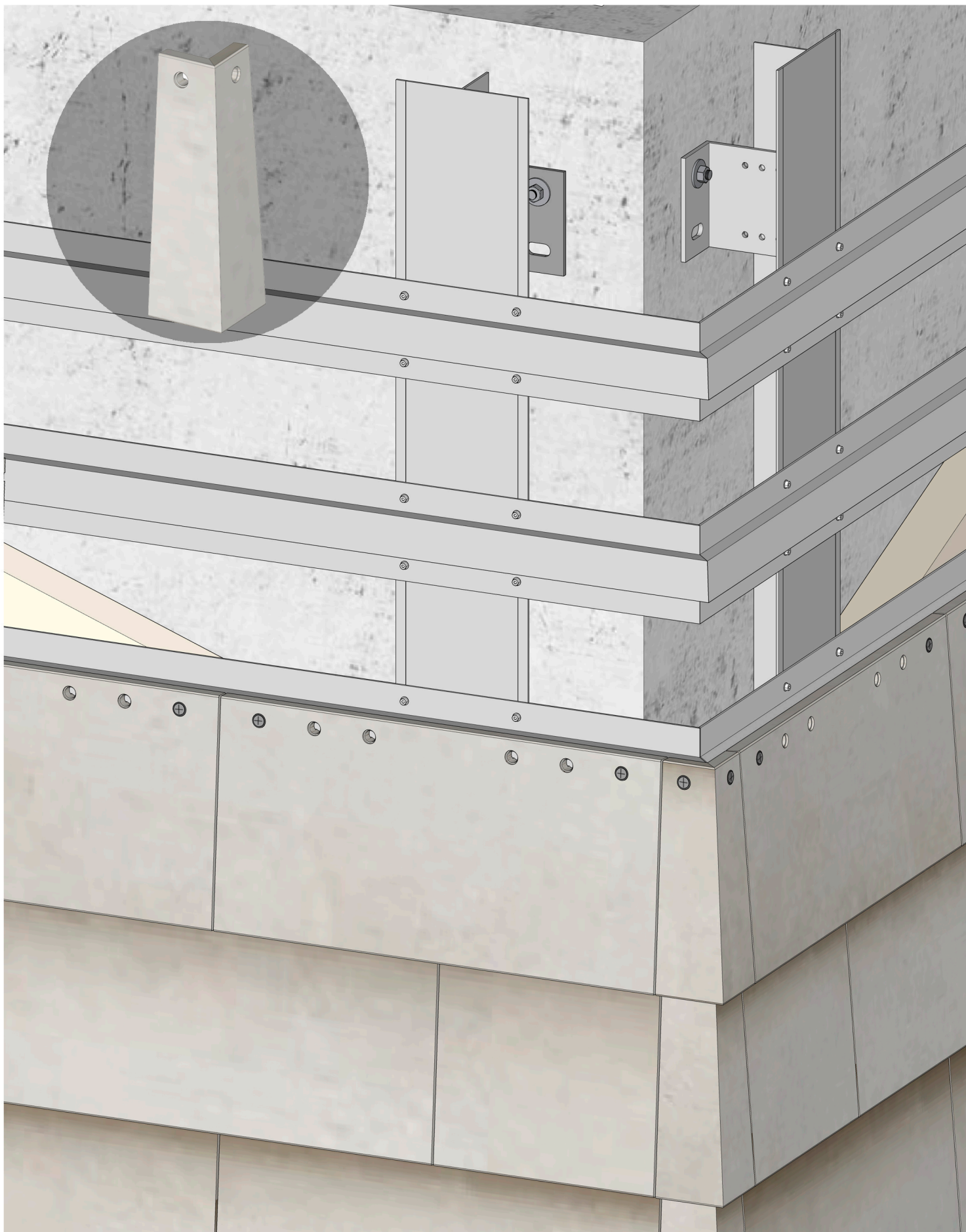
Maximum distance recommended between horizontal omegas 175mm



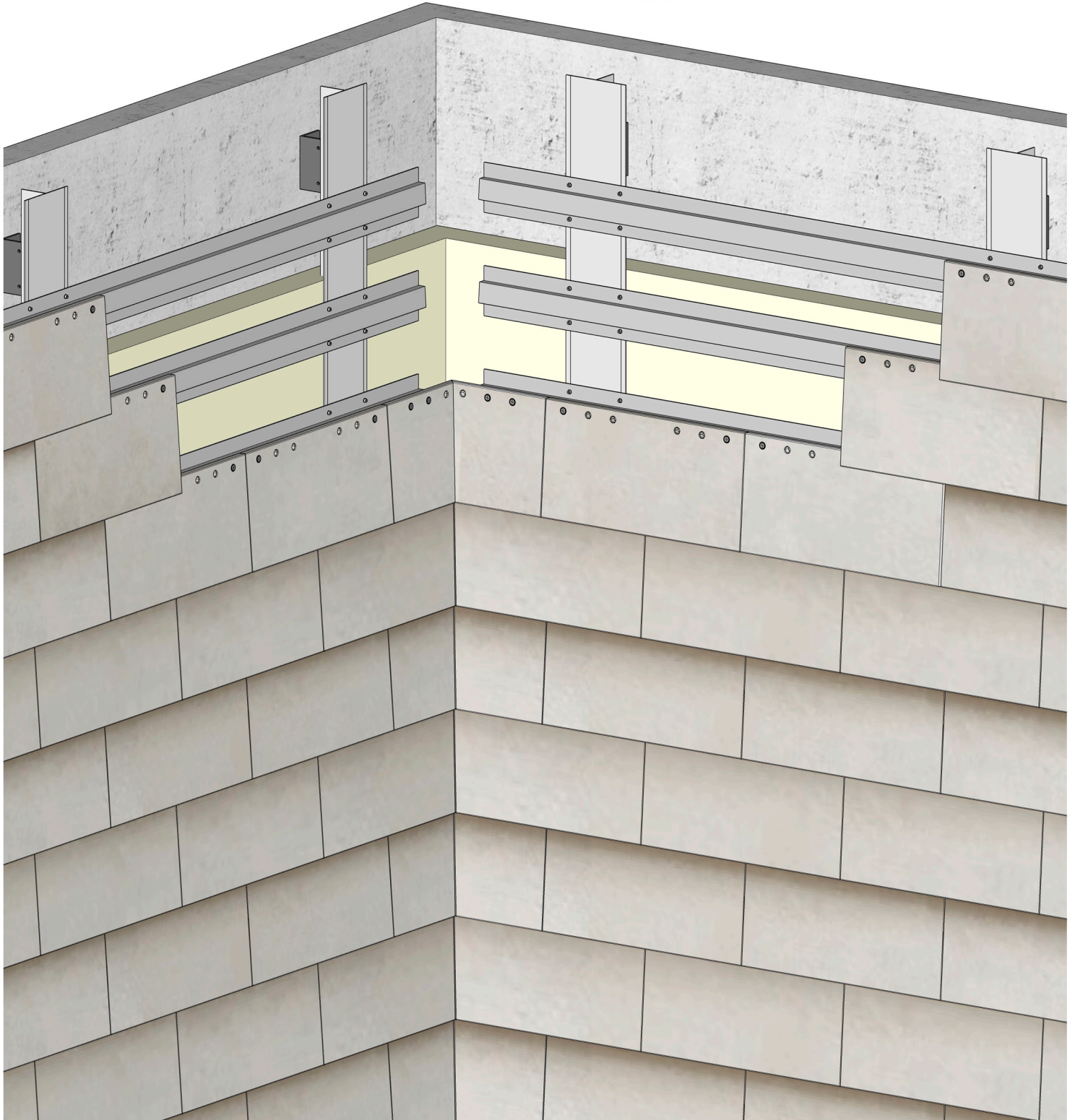
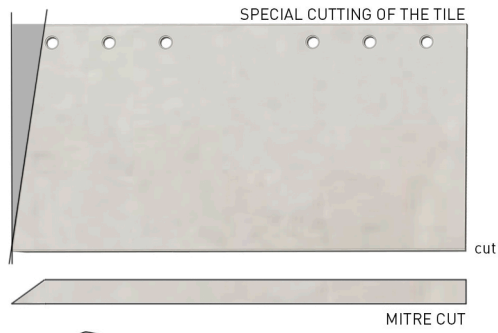
SPECIAL CUTTING OF THE TILE















## TECHNICAL DATA SHEET

Rusticotta 14x200x400 and 14x200x520

For use in coating vertical façades

<b>Water absorption.</b>	EN ISO 10545-3	0.5 – 3.0 %
<b>Modulus of rupture</b>	EN ISO 10545-4	>17 N/mm <sup>2</sup>
<b>Frost resistance</b>	EN ISO 10545-12	Fulfilled
<b>Resistance to thermal shock</b>	EN ISO 10545-9	Fulfilled
<b>Impact resistance</b> (by measurement of coefficient of restitution)	EN ISO 10545-5	0.7-0.9
<b>Fire resistance</b>		A1 No need for testing (Decision 96/603/EEC modified)
<b>Stain resistance</b>	EN ISO 10545-14	Group 5 (glazed)
<b>Chemical resistance</b>	EN ISO 10545-13	Group GA (glazed)
<b>Linear termal expansion</b>	EN ISO 10545-8	$5.75 * 10^{-6} K^{-1} (\pm 1)$
<b>Weight (simple)</b>		30 kg/m <sup>2</sup> ±0.5

<b>Tolerances and dimensions</b>		
<b>Width</b>	In extruding direction	±4.0 mm
<b>Height</b>	Opposite to extruding direction	±2.0 mm
<b>Thickness</b>	EN ISO 10545-2	±1.0 mm
<b>Straightness (in extruding direction)</b>	EN ISO 10545-2	±1.0 mm
<b>Ortogonality</b>	EN ISO 10545-2	±2.0 mm
<b>Flatness</b>	EN ISO 10545-2	±2.0 mm



## WINDOW



## OUTSIDE CORNER

