

**KLINKER
COVADONGA**
Founded in 1886

La Covadonga

Our history is that of a family that changed perspectives, landscapes and looks, manufacturing a material with which the facades that have given homes to thousands of families would be built or which accompany us daily with every move. Since our origin, we have made over 200 different brick models complementing our offer with the design and manufacture of more than 1,200 special shapes.

Our journey began in 1886, manufacturing facing bricks, hollow bricks and ceramic vaults. The family company reached mid 20th century with a change in productive model becoming the first company in the sector to manufacture coloured glazed facing brick: this new technique was a revolution, changing the classic colour of bricks and permitting a choice of new colours to be used in the construction of facades.

1886

Founding of La Covadonga: factory manufacturing facing bricks, hollow bricks and ceramic vaults.

1990

Presentation of 100% Klinker facing brick.

1999

New product: Klinker clay paver.

2015

First project supplied to United States of America.

1957

Manufacture of coloured glazed facing bricks; La Covadonga pioneers this technique.

1995

Manufacture of rustic Klinker bricks commences.

2003

Expansion into international markets: first commercial delegations in different European countries.

2017

First project supplied to Australia.



Childcare Centre, Sydney Olympic Park, Sydney, Australia

ARCHITECT: Bates Smart
MODELS: Mountain Green 3320-L, 3321-L, 3323-L, 3324-L, 3-L

*Photos: Courtesy of Ecove





4 Homes in Puerta de Hierro, Madrid, Spain

ARCHITECT: De Lapuerta + Campo Arquitectos

MODEL: Liège Red





IES Cabrils, Barcelona, Spain

ARCHITECT: VSarquitectura
MODELS: Yellow 3217-L, White B4-L



Vilamarina, Viladecans, Barcelona, Spain

ARCHITECT: Batlle i Roig Arquitectes
MODEL: White B4-L





Warner Road, London, UK

ARCHITECT: David Money Architects

MODEL: 3322-L





120 Apartments in Santa Coloma de Gramanet, Barcelona, Spain

ARCHITECT: Pere Joan Ravetllat, Carme Ribas, Gabriel Lerma, Marta Peris

MODEL: White B4-L



Auditorium in Llinars del Vallès, Barcelona, Spain

ARCHITECT: Alvaro Siza y ARESTA arquitectura + urbanisme
MODEL: CT





196 Orchard Street, Manhattan, New York, USA

ARCHITECT: Ismael Leyva Architects
MODEL: 3505-R30 BB

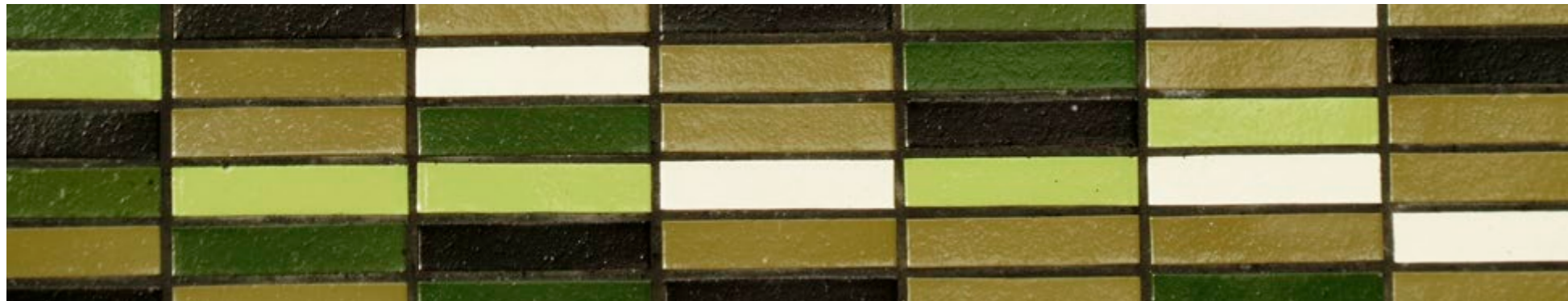




Steakburger, Madrid, Spain

ARCHITECT: MADRID IN LOVE
MODELS: White B4-L, Jet Black 3500-L





Kindergarten, Flémalle, Belgium

ARCHITECT: Nelis - Delincé Atelier d'architecture

MODELS: White B4-L, Emerald 3316-L, Jet Black 3500-L, 3302-L, 3314-L



Hospital in Ciudad Real, Spain

ARCHITECT: Angel Fernández Alba.

MODEL: Covadonga Red A50-L





Health Centre in Tordera, Barcelona, Spain

ARCHITECT: Carles Muro

MODELS: Jet Black 3500-L, Anthracite 3502-LO





Refurbishment Mercat de Sant Antoni. Barcelona, Spain

ARCHITECT: Pere Joan Ravetllat, Carme Ribas

MODEL: White B4-L



Saendelft, Holland

ARCHITECT: Akropolis
MODEL: Mediterranean Blue 3413-L



Ronda Guinardó, Ronda del Mig, Barcelona, Spain

ARCHITECT: José Antonio Martínez Lapeña, Elías Torres Tur
MODELS: Emerald 3316-L, 3315-L

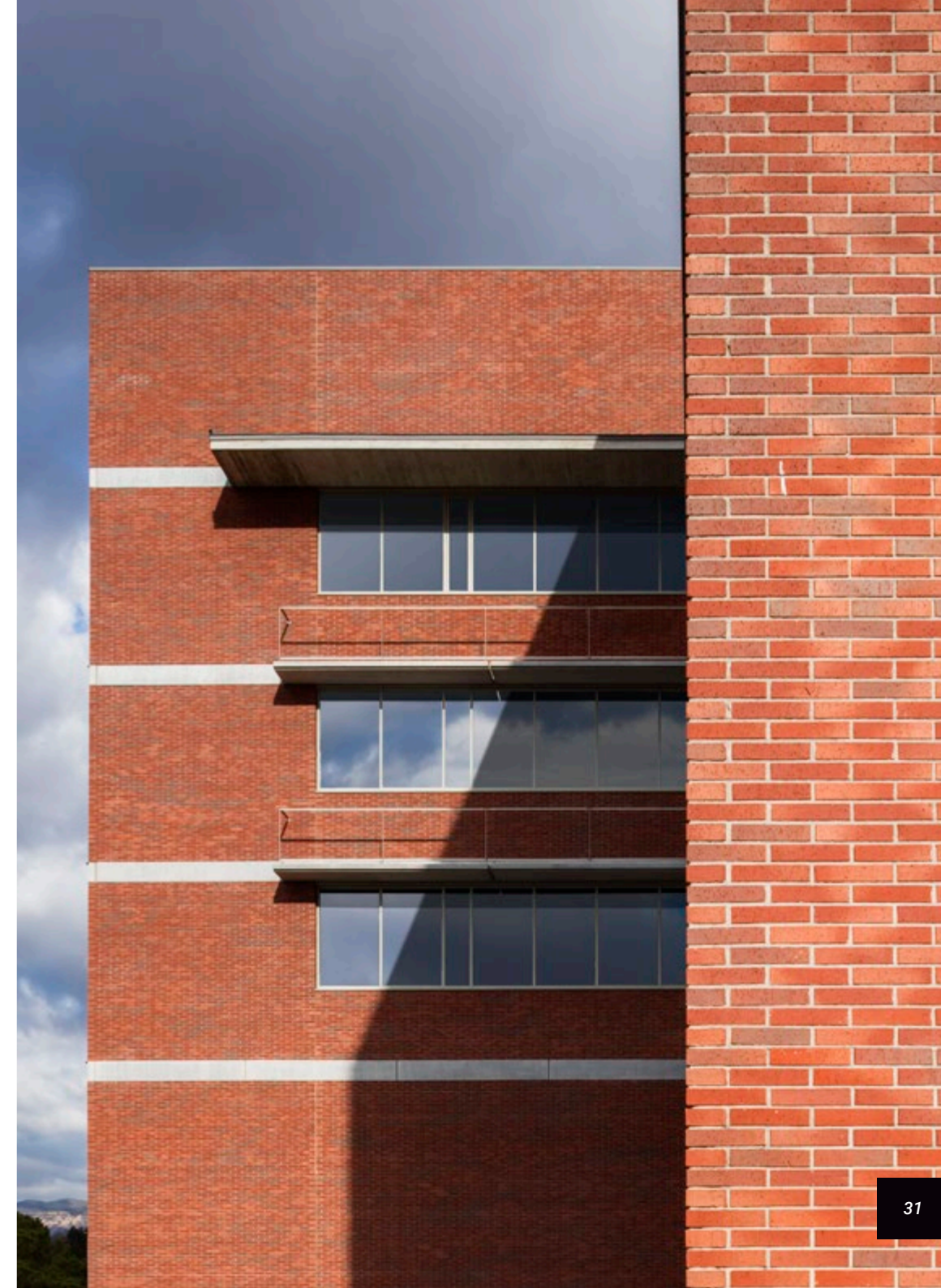




Biokit Laboratories in Lliçà d'Amunt. Werfen Group, Barcelona, Spain

ARCHITECT: Bonell i Gil arquitectos + Pinearq

MODEL: Copenhagen 4105





APC Clothing Store
 ARCHITECT: Laurent Deroo Architecte
 Ledbury Road, London, UK
 MODELS: Grey 3-L, Pearl Grey 3606-L, Silver Grey 3608-L



APC Clothing Stores
 ARCHITECT: Laurent Deroo Architecte



Kings Cross, London, UK
 MODEL: Jet Black 3500-L



Melrose Place, Los Angeles, USA
 MODEL: Titanium Grey 3609-L



Rue Jacob, Paris, France
 MODEL: Liège Red



Warnaco (Calvin Klein), Roosendaal, Holland

ARCHITECT: Wastiau & Co, Westerlo

MODELS: White B4-L, Jet Black 3500-L



St. Michael's Community Hospital, Braintree, UK

ARCHITECT: Steffian Bradley Architects

MODEL: Emerald 3316-L





Lycée Blanc Ferroul, Lezignan, France

ARCHITECT: Rudy Ricciotti

MODEL: White B4-L

* **PHOTOS:** Kevin Dolmaire





Tulane University Commons, New Orleans, USA

ARCHITECT: Weiss/Manfredi
MODEL: 3326-L





Wellton Park Luxury Apartments, Moscow, Russia

ARCHITECT: DKV Architects

MODELS: 1-L, 2-L, 3-L, 4-L, 5-L, 6-L, 7-L, 8-L

New Elizabeth Line Underground Station,
Tottenham Court Road, London, UK

ARCHITECT: Hawkins\Brown

MODELS: 3224-L, Anthracite 3502-LO



Eco-quartier Boucicaut. Paris, France

ARCHITECT: Michel Guthmann - Agence MG-AU

MODEL: 3610-LO

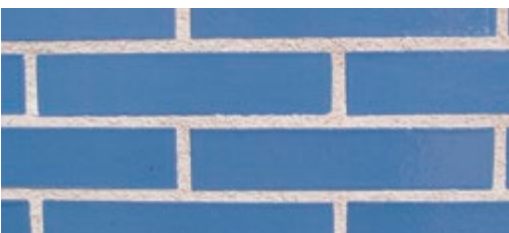


Catalogue

Glazed Klinker Bricks



SILVER GREY (Ref. 3608-L)



MEDITERRANEAN BLUE (Ref. 3413-L)



JET BLACK (Ref. 3500-L)



RUBY (Ref. 3102-L)



EMERALD (Ref. 3316-L)



SILVER BLACK (Ref. 3504-R30)



WHITE (Ref. B4-L)



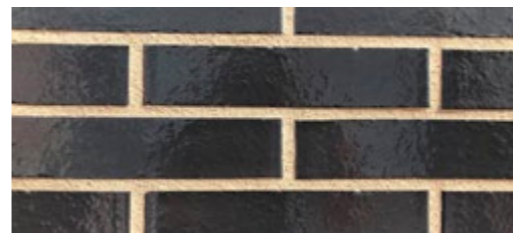
HOLLAND (Ref.3219-L)



OCEAN BLUE (Ref. 3417-L)



PEARL BLACK (Ref. 3505-R30)



GRAPHITE (Ref. 7-L)



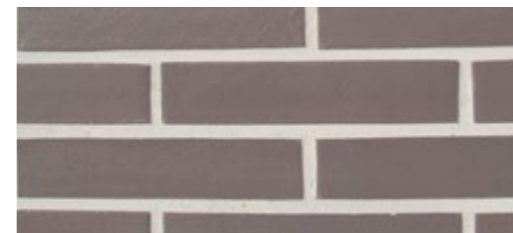
SPECKLED GOLD (Ref. 3201-L)



MOUNTAIN GREEN (Ref. 3320-L)



URBAN METAL



TITANIUM GREY (Ref. 3609-L)



HONEY (Ref. CIS-L)



LEATHER AND HONEY (Ref. 3200-L)



SMOOTH SILVER BLACK (Ref. 3504-LO)



PEARL GREY (Ref. 3606-L)



ATLANTIC (Ref. 3310-L)



RUST (Ref. 3111-L)



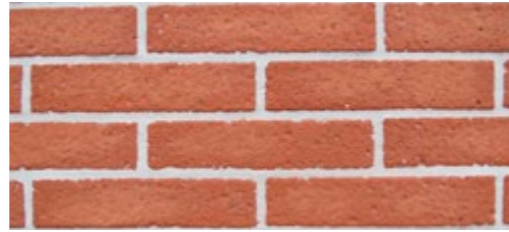
SMOOTH PEARL BLACK (Ref. 3505-LO)

Metallic Glazed Klinker Bricks

Rustic Klinker Bricks



LIEGE



LIEGE RED



LIEGE OSLO



CASTILLE

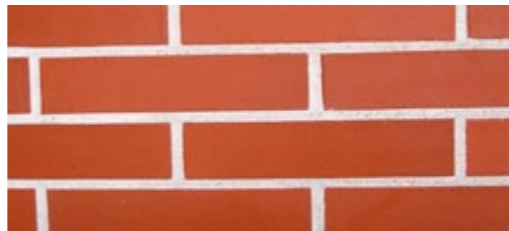


ALTAMIRA

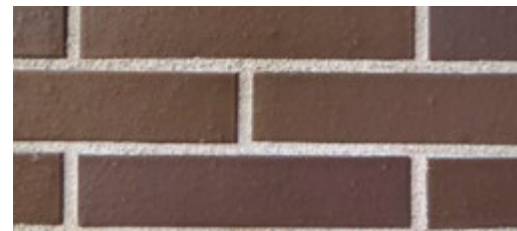
Klinker Bricks



ANTHRACITE (Ref. 3502-LO)



ENGLISH RED (Ref. VMR-L)



OSLO



COVADONGA RED (Ref. A50-L)



COPENHAGUE (Ref. 4105)

*If you can't see what you are looking for in our catalogue, bespoke colours from a RAL reference can be designed for your project.

Pavers

Natural, durable clay paving ages beautifully with minimal maintenance and is totally reusable.

Easy to lay and maintain, our pavers are for both pedestrian and vehicular traffic.



COVADONGA RED



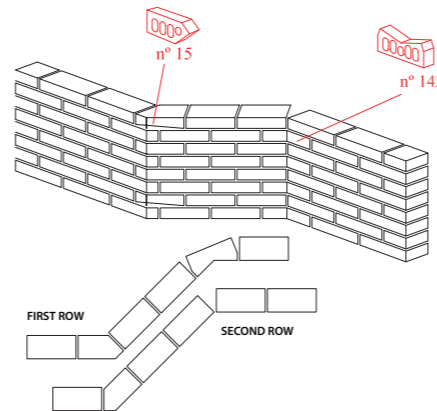
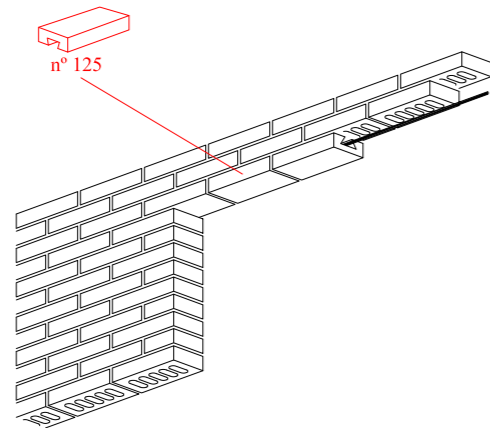
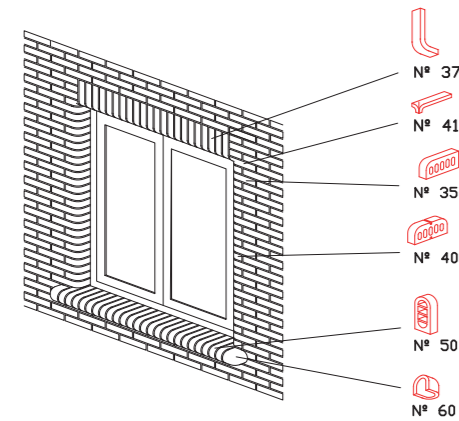
OSLO



Museum of Human Evolution, Burgos, Spain

ARCHITECT: Juan Navarro Baldeweg
MODEL: Covadonga Red paver

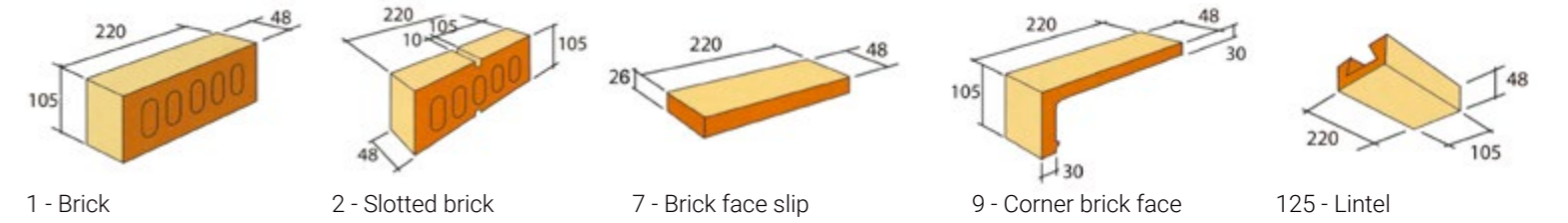
Construction details



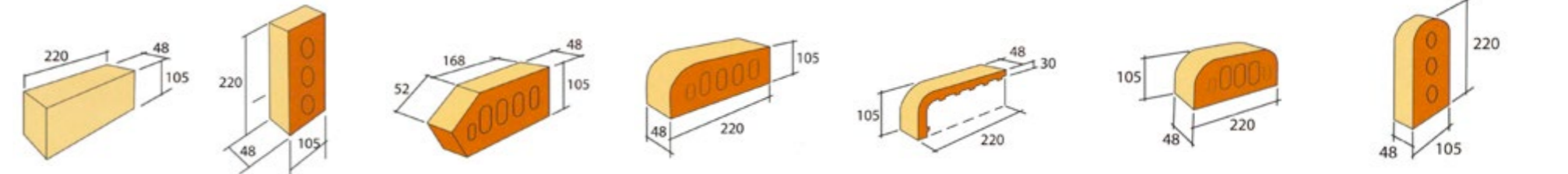
Special shapes

Special shapes provide technical and aesthetic solutions in the same Klinker quality as our facing bricks.

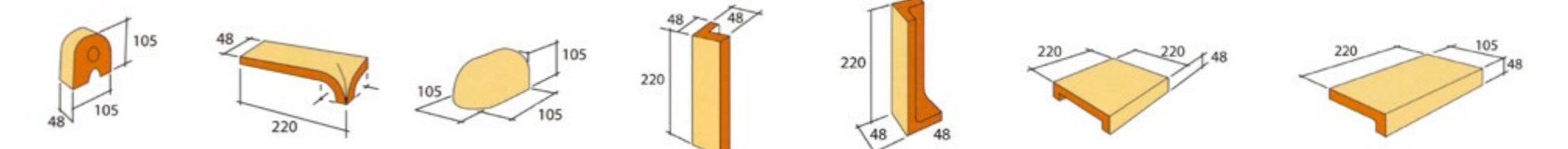
Available in several sizes.



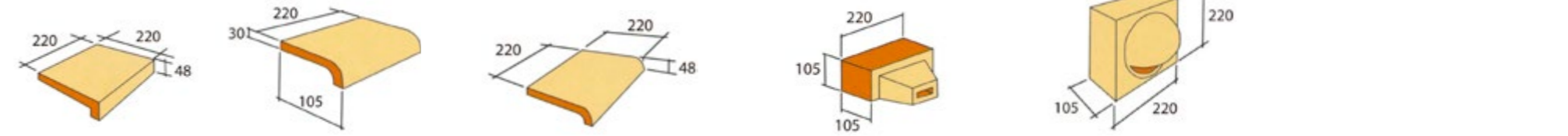
1 - Brick 2 - Slotted brick 7 - Brick face slip 9 - Corner brick face slip 125 - Lintel



3 - Solid brick glazed on face and bed 5 - Brick - Two stretchers and header 15 - 135° Degree squint brick 35 - Single bullnose brick 37 - Single bullnose corner brick face slip 39 - Double bullnose brick 50 - Cownose brick



51 - Half cownose brick 41 - Bullnose internal return 60 - Cownose corner 13 - Soldier return of brick face slip 11 - Soldier corner of corner brick face slip 19 - Capping 66 - Sill brick



93 - Sill 48 - Cownose sill brick 116 - Bullnose sill 248 - Gargoyle 128 - Ventilation Shell



Apartments in San Andreu, Barcelona, Spain

ARCHITECT: Emiliano López y Mónica Rivera
MODEL: Atlantic 3310-L

Technical characteristics

In La Covadonga, 100% of production is Klinker quality

Compressive strength	125 N/mm ²
Water absorption	3,5%
Suction	0,2 Kg/m ² xmin
Expansion by humidity	0,11 mm/m

NIL EFFLORESCENCE- FROST RESISTANT - NOT HIDROFUGED

