

RUSTIKOTTA

tempio®

**In Cerámica Mayor we like to live with passion. We
believe fully in what we do, we do not understand
the world without living it.
An idea, it's a challenge, a smile.**

**En Cerámica Mayor nos gusta vivir con pasión.
Creemos plenamente en lo que hacemos, no
entendemos el mundo sin vivirlo.
Una idea, es un reto, una sonrisa.**



Natural

**Natural and integrated design.
We are inspired by those who appreciate
beauty, are not afraid of change and have a
passion for innovation.**

**Diseño natural e integrado.
Nos inspiran aquellos que aprecian la belleza,
no les asusta el cambio y sienten pasión por la
innovación.**



Rustic

Rustikotta takes us to the artisan;
Textures and traditional colors.

Rustikotta nos traslada a lo artesanal;
Texturas y colores tradicionales.

RUSTIKOTTA

Collection

The Rustikotta coating system from Tempio, is a traditional façade system adapted to an avant-garde production process.

Thanks to its high performance this product is resistant to extreme temperatures, stable color and waterproof.

The combination of natural clays and special effects on the surface contributes to give the building a special texture.

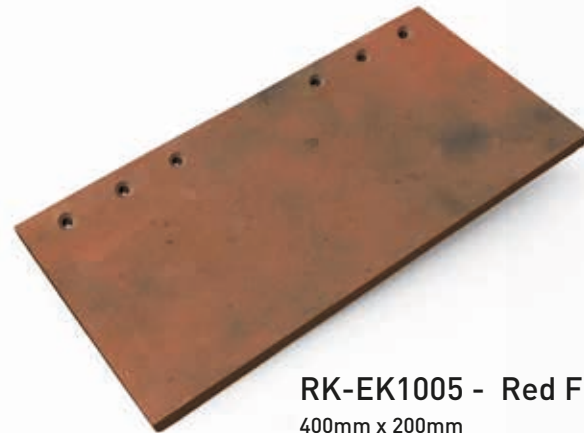
- Constant colour
- Frost resistance
- Water proof
- Natural materials
- Recycled material



RK-EK1004 - Anthracite
400mm x 200mm



RK-EK1009 - Light Grey Flamed
400mm x 200mm



RK-EK1005 - Red Flamed
400mm x 200mm



RK-EK1010 - Yellow Flamed
400mm x 200mm

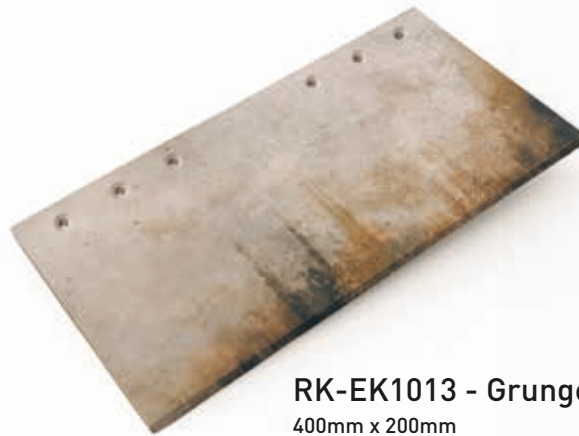
RUSTIKOTTA

Colección

El sistema de revestimiento Rustikotta de Tempio, es un sistema de fachada tradicional adaptado a un proceso de producción más vanguardista. Gracias a sus altas prestaciones es un producto resistente a temperaturas extremas, de color estable e impermeable.

La combinación de arcillas naturales y de efectos especiales sobre la superficie aporta una textura especial al edificio.

- Color estable
- Resistente a la helada
- Impermeable
- Materiales naturales
- Material reciclado



RK-EK1013 - Grunge Flamed
400mm x 200mm



RK-EK1014 - White Splatter
400mm x 200mm



RK-EK1015 - Toned Flamed
400mm x 200mm



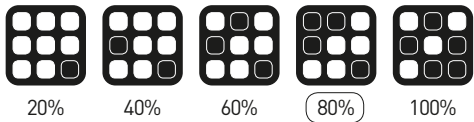
RK-EK1012 - Red Grunge
400mm x 200mm

RUSTIKOTTA

RK_EK1004 - ANTHRACITE



Aesthetic classification and shade variations
Clasificación estética y destonificación





RUSTIKOTTA

RK_EK1005 - RED FLAMED

Water absorption
 EN ISO 10545-3 | **< 0,5 - 3.0 %**

Frost resistance
 EN ISO 10545-12 | **✓**

Thermal shock resistance
 EN ISO 10545-9 | **✓**

Stain resistance
 EN ISO 10545-14 | **5**

Chemical resistance
 EN ISO 10545-13 | **6A**

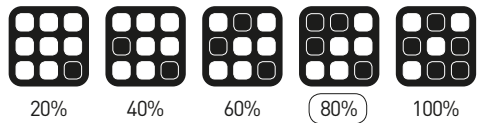
Modulus of rupture
 EN ISO 10545-4 | **>17N / mm²**

Impact resistance
 EN ISO 10545-5 | **0.7-0.9**

Dimensional tolerance
 EN ISO 10545-2 | **✓**



Aesthetic classification and shade variations
 Clasificación estética y destonificación





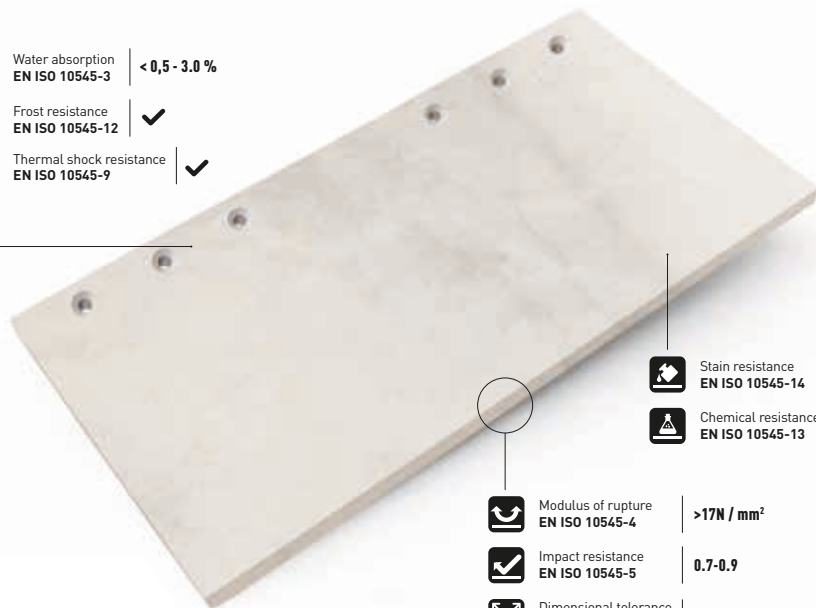
RUSTIKOTTA

RK_EK1009 - **LIGHT GREY FLAMED**

Water absorption
EN ISO 10545-3 | < 0,5 - 3.0 %

Frost resistance
EN ISO 10545-12 | ✓

Thermal shock resistance
EN ISO 10545-9 | ✓



Stain resistance
EN ISO 10545-14 | 5

Chemical resistance
EN ISO 10545-13 | 6A

Modulus of rupture
EN ISO 10545-4 | >17N / mm²

Impact resistance
EN ISO 10545-5 | 0.7-0.9

Dimensional tolerance
EN ISO 10545-2 | ✓



Aesthetic classification and shade variations
Clasificación estética y destonificación



20%

40%

60%

80%

100%



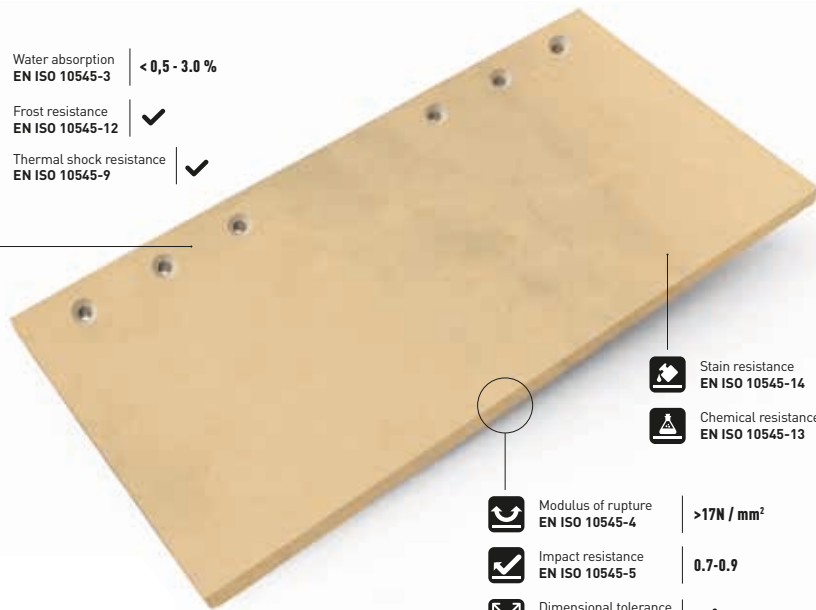
RUSTIKOTTA

RK_EK1010 - YELLOW FLAMED

Water absorption
EN ISO 10545-3 | < 0,5 - 3.0 %

Frost resistance
EN ISO 10545-12 | ✓

Thermal shock resistance
EN ISO 10545-9 | ✓



Stain resistance
EN ISO 10545-14 | 5

Chemical resistance
EN ISO 10545-13 | 6A

Modulus of rupture
EN ISO 10545-4 | >17N / mm²

Impact resistance
EN ISO 10545-5 | 0.7-0.9

Dimensional tolerance
EN ISO 10545-2 | ✓



Aesthetic classification and shade variations
Clasificación estética y destonificación



20% 40% 60% 80% 100%





RUSTIKOTTA

RK_EK1013 - LIGHT GRUNGE FLAMED

Water absorption
EN ISO 10545-3 | < 0,5 - 3.0 %

Frost resistance
EN ISO 10545-12 | ✓

Thermal shock resistance
EN ISO 10545-9 | ✓



Stain resistance
EN ISO 10545-14 | 5

Chemical resistance
EN ISO 10545-13 | 6A

Modulus of rupture
EN ISO 10545-4 | >17N / mm²

Impact resistance
EN ISO 10545-5 | 0.7-0.9

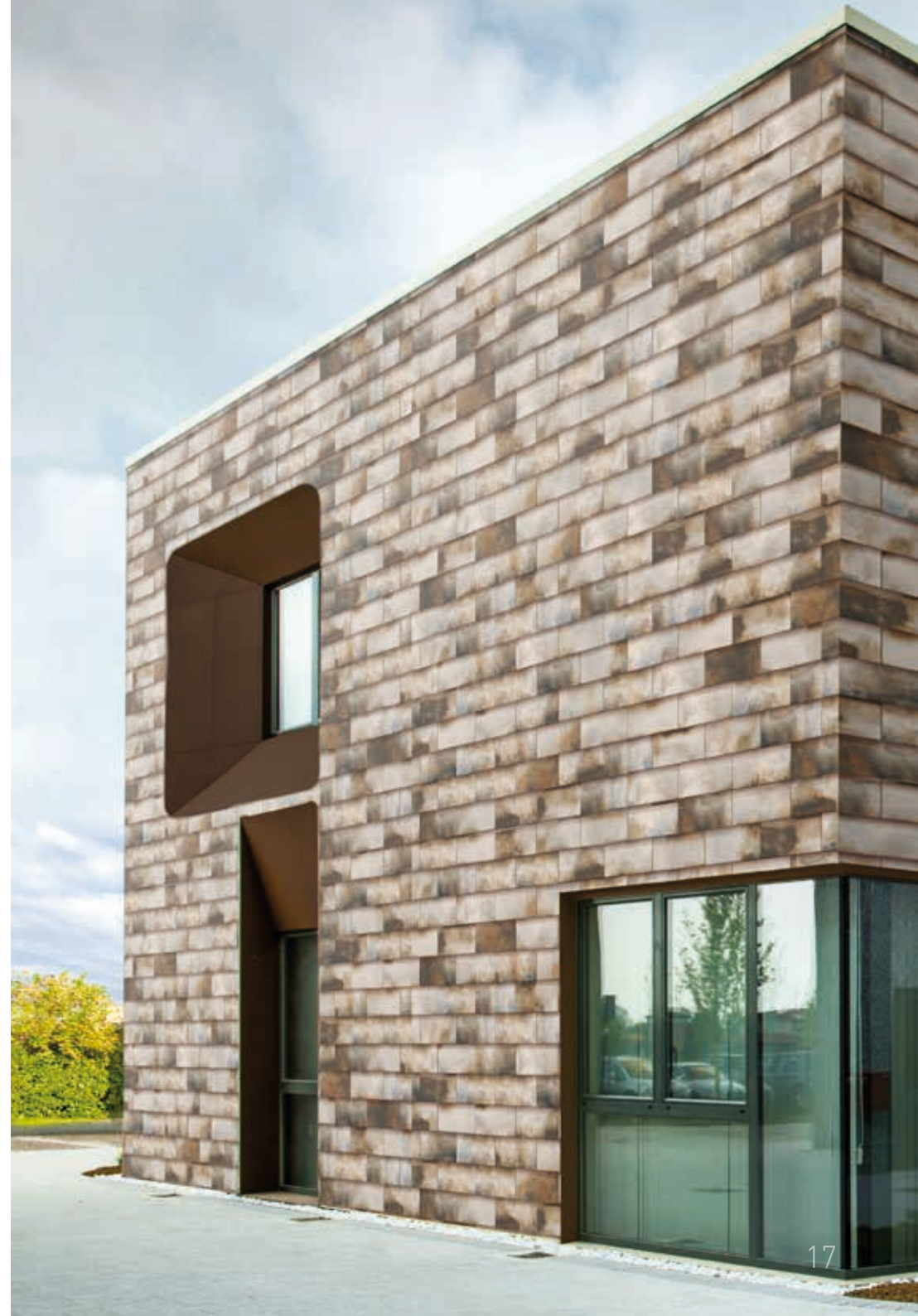
Dimensional tolerance
EN ISO 10545-2 | ✓



Aesthetic classification and shade variations
Clasificación estética y destonificación



20% 40% 60% 80% 100%





RUSTIKOTTA

RK_EK1014 - WHITE SPLATTER

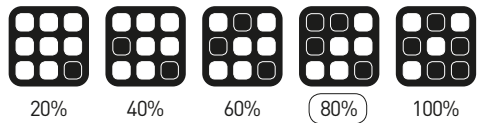
	Water absorption EN ISO 10545-3	< 0,5 - 3.0 %
	Frost resistance EN ISO 10545-12	✓
	Thermal shock resistance EN ISO 10545-9	✓

	Stain resistance EN ISO 10545-14	5
	Chemical resistance EN ISO 10545-13	6A

	Modulus of rupture EN ISO 10545-4	>17N / mm ²
	Impact resistance EN ISO 10545-5	0.7-0.9
	Dimensional tolerance EN ISO 10545-2	✓



Aesthetic classification and shade variations
Clasificación estética y destonificación





RUSTIKOTTA

RK_EK1015 - TONED FLAMED

Water absorption
EN ISO 10545-3 | < 0,5 - 3.0 %

Frost resistance
EN ISO 10545-12 | ✓

Thermal shock resistance
EN ISO 10545-9 | ✓



Stain resistance
EN ISO 10545-14 | 5

Chemical resistance
EN ISO 10545-13 | 6A

Modulus of rupture
EN ISO 10545-4 | >17N / mm²

Impact resistance
EN ISO 10545-5 | 0.7-0.9

Dimensional tolerance
EN ISO 10545-2 | ✓



Aesthetic classification and shade variations
Clasificación estética y destonificación



20% 40% 60% 80% 100%



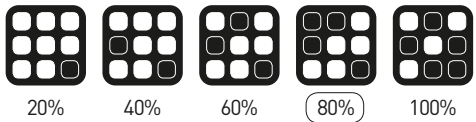


RUSTIKOTTA

RK_EK1012 - RED GRUNGE FLAMED

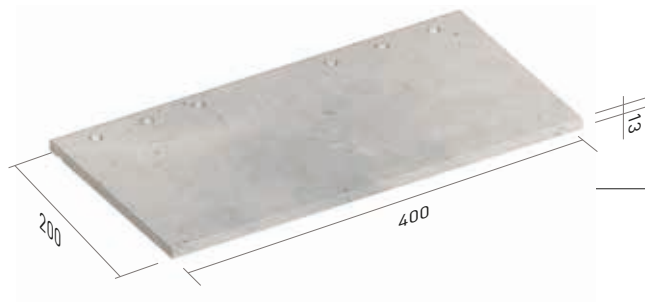


Aesthetic classification and shade variations
Clasificación estética y destonificación



RUSTIKOTTA

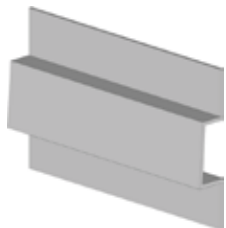
Installation metal system



Stainless steel self drilling
Screw 5,5x25



Countersunk stainless steel
Self drilling screw 4,2x28



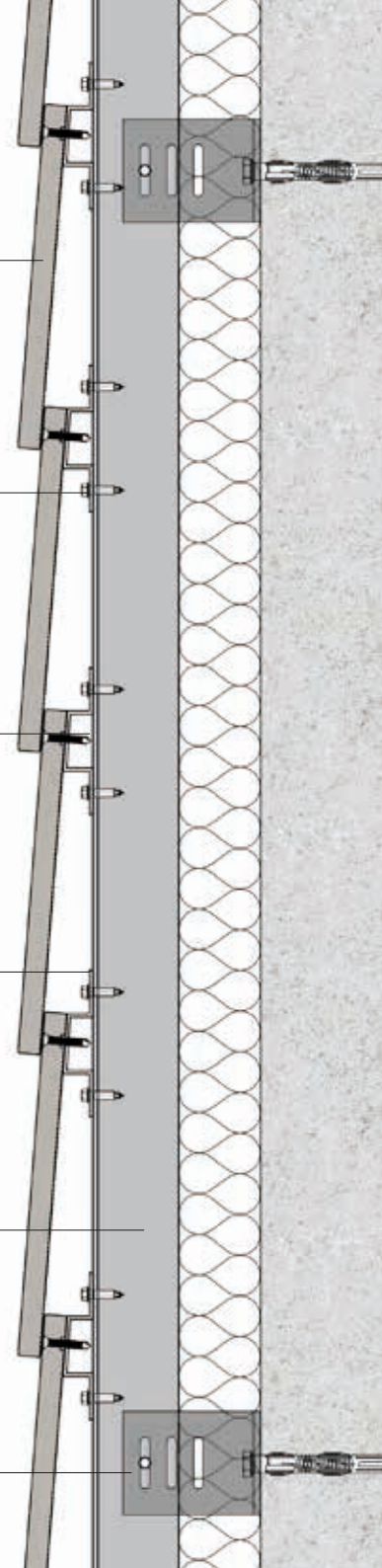
Omega profile



Vertical t profile



Retaininig bracket



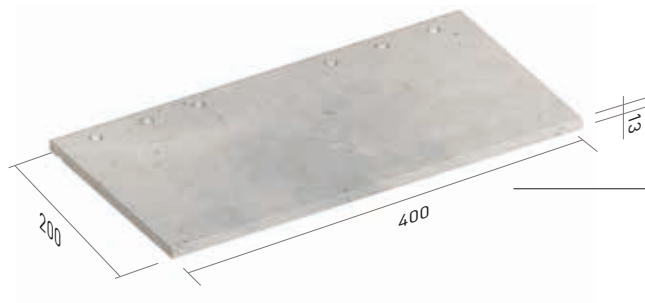
RUSTIKOTTA

Corner solution



RUSTIKOTTA

Installation wood system



Stainless steel self drilling
Screw 5,5x25



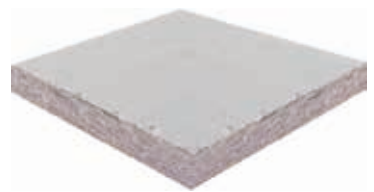
WOOD PROFILE



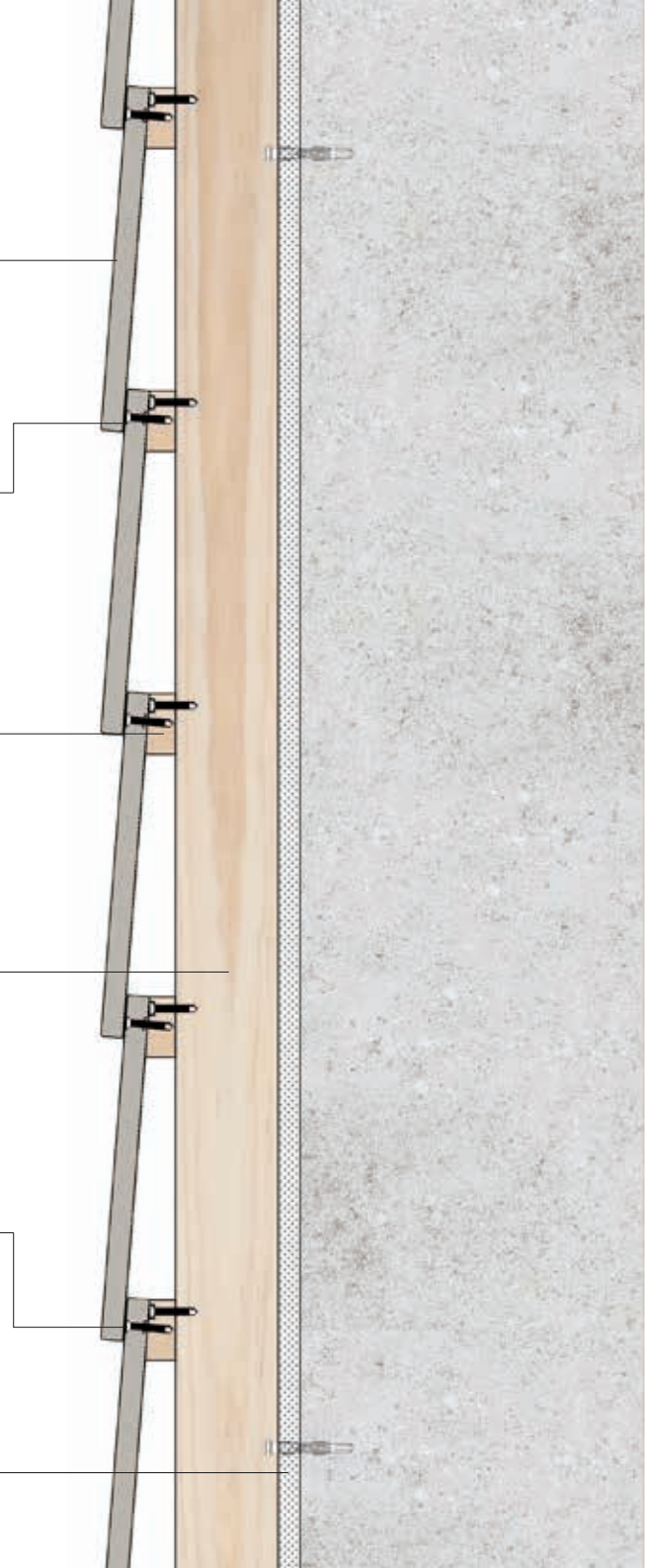
VERTICAL WOOD PROFILE



Countersunk stainless steel
Self drilling screw 4,2x28



AQUAPANEL



RUSTIKOTTA

Corner solution



tempio® RUSTIKOTTA

www.tempio.es

CERÁMICA MAYOR, S.A. Partida Planet, s/n. 03510 Callosa d'En Sarrià (Alicante-España) | T+34 965 881 175 | www.ceramicamayor.com